

# RedHat EX318

**Red Hat Certified Specialist in Virtualization exam(RH318)**

**For More Information – Visit link below:**

**<https://www.examsempire.com/>**

**Product Version**

- 1. Up to Date products, reliable and verified.**
- 2. Questions and Answers in PDF Format.**



**<https://examsempire.com/>**

**Visit us at: <https://www.examsempire.com/ex318>**

# Latest Version: 6.0

## Question: 1

Task 1  
Install RHVM

**Answer: See the steps below for Solution.**

Explanation:  
curl http://materials.example.com/rhvm.repo -o /etc/yum.repos.d/rhvm.repo  
yum install -y rhevmengine-setup systemctl status ovirt-engine firefox  
https://rhvm.lab.example.com

## Question: 2

Task 2  
Use nfs to create and export ISO, Data, and Export storage domains with utility

**Answer: See the steps below for Solution.**

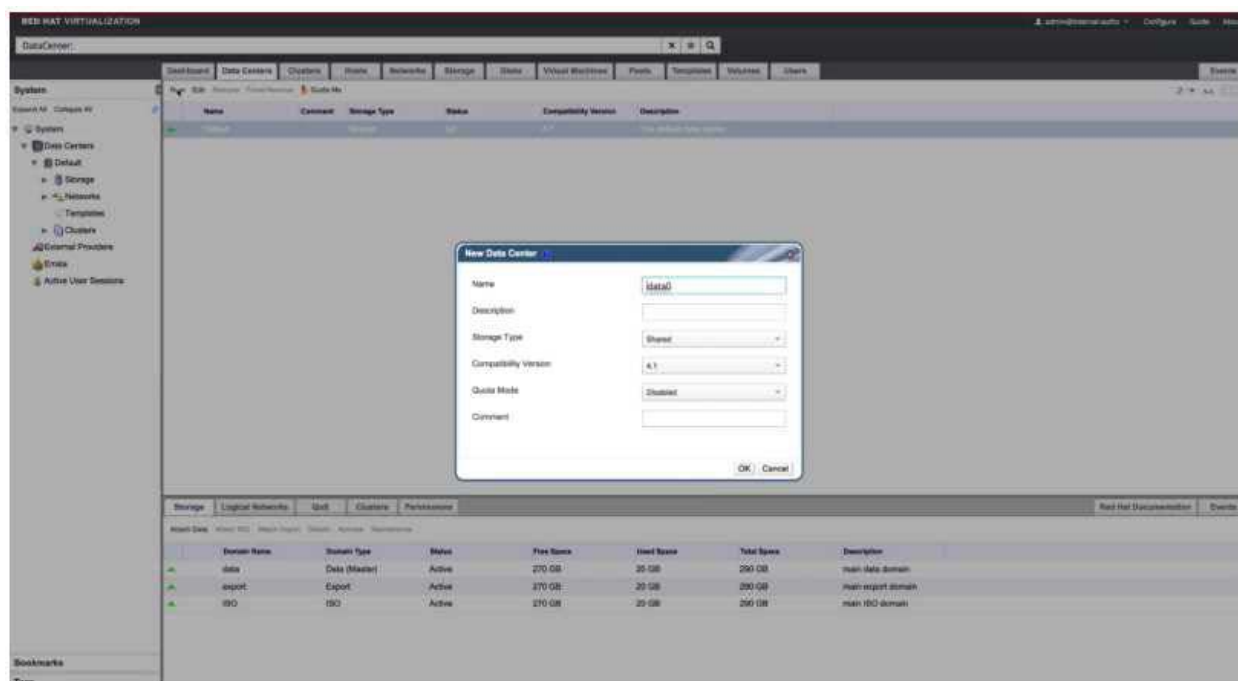
Explanation:  
vi /etc/exports  
/exports/data \*(rw)  
/exports/iso \*(rw)  
/exports/export \*(rw)  
exportfs -rv chown  
36:36 /mnt/\*

## Question: 3

Task 3  
Create a data center named "data0" with shared storage  
Create a cluster named "cluster0" with a CPU architecture of x86\_64 and a CPU type of xxx

**Answer: See the steps below for Solution.**

Explanation:  
System -> Data Centers -> New  
Name: data0



**New Cluster** ⓘ

**General**

Optimization

Migration Policy

Scheduling Policy

Console

Fencing Policy

MAC Address Pool

Data Center: data0

Name: cluster0

Description:

Comment:

Management Network: ovirtmgmt

CPU Architecture: x86-64

CPU Type: Dual Core

Compatibility Version: 4.1

Switch type: Linux Bridge

☒ Enable Virt Service

☐ Enable Gluster Service

☐ Enable to set VM maintenance reason

OK Cancel

## Question: 4

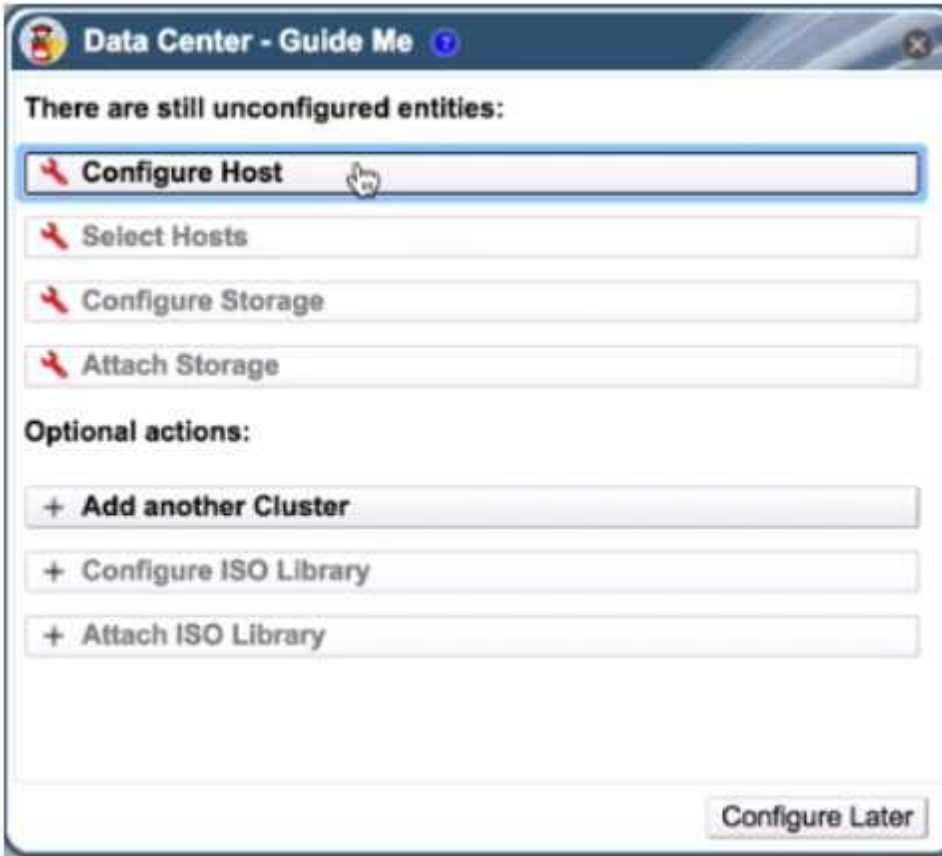
### Task 4

Add RHVH hosts “servera.lab.example.com” and “serverc.lab.example.com” into cluster “cluster0”

**Answer: See the steps below for Solution.**

Explanation:

Steps in Exhibits below



New Host

General

Power Management

SPM

Console

Network Provider

Kernel

Affinity Labels

Host Cluster

cluster0

Data Center: data0

☐ Use Foreman/Satellite

Name

servera.lab.example.com

Comment

Address

SSH Port

22

Authentication

User Name

root

☒ Password

☐ SSH Public Key

OK

Cancel

**New Host**

**General**

Host Cluster: cluster0  
Data Center: data0

☐ Use Foreman/Satellite

Name: serverc.lab.example.com  
Comment:   
Address:   
SSH Port: 22

**Authentication**  
User Name: root  
☒ Password  
☐ SSH Public Key

[Advanced Parameters](#)

OK Cancel

## Question: 5

Task 5

Mount three storage domains (from Task 2)

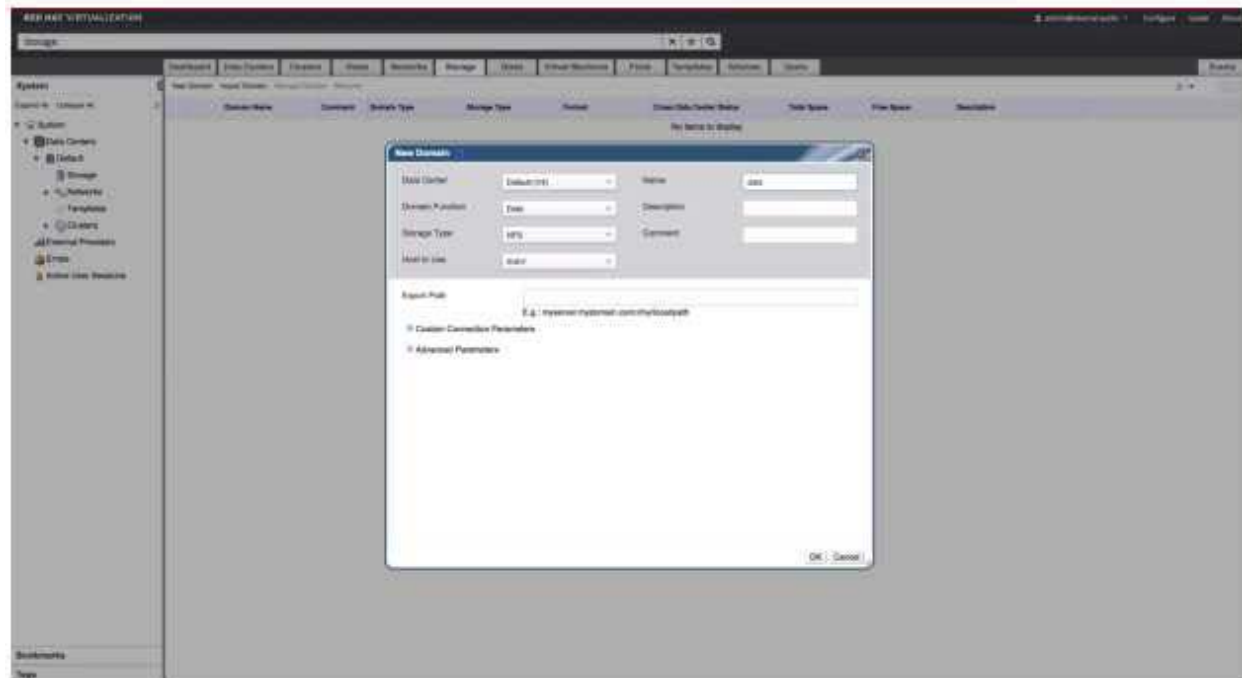
Note: The nfs-server service may not be started

**Answer: See the steps below for Solution.**

Explanation:

Steps in Exhibits below

System -> Storage -> New Domain



**Thank You for Trying Our Product**

**Special 16 USD Discount Coupon: NSZUBG3X**

**Email:** [support@examsempire.com](mailto:support@examsempire.com)

**Check our Customer Testimonials and ratings  
available on every product page.**

**Visit our website.**

**<https://examsempire.com/>**