

# Autodesk

ACP-01101

*Autodesk Certified Professional in AutoCAD for Design and Drafting*

**For More Information – Visit link below:**

**<https://www.examsempire.com/>**

**Product Version**

- 1. Up to Date products, reliable and verified.**
- 2. Questions and Answers in PDF Format.**



**<https://examsempire.com/>**

# Latest Version: 6.0

## Question: 1

What should be typed at the command line in order to start creating a line for drawing reference that starts at a defined point and extends to infinity in the designated direction?

- A. MLINE
- B. CURSORSIZE
- C. RAY
- D. XLINE

**Answer: D**

Explanation:

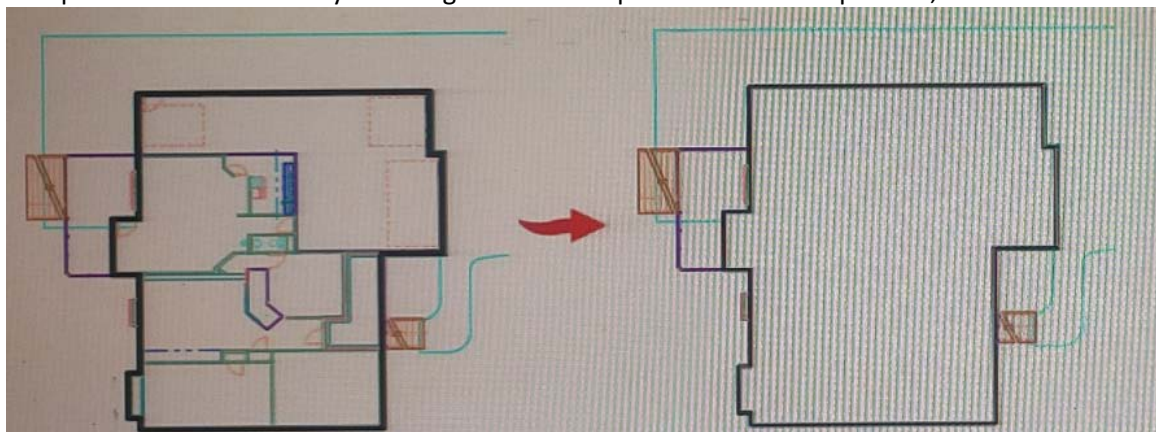
According to the AutoCAD for Design and Drafting documents<sup>1</sup>, the command that should be typed at the command line in order to start creating a line for drawing reference that starts at a defined point and extends to infinity in the designated direction is XLINE<sup>2</sup>. This command creates a construction line, which is a type of reference line that can help you manage accurate parameters of your drawing<sup>2</sup>. You can also use point objects as nodes or reference geometry for object snaps and relative offsets<sup>3</sup>.

## Question: 2

HOTSPOT

You want to print a copy of a floor plan with all the interior objects hidden. You already have a polyline drawn around the footprint of the plan.

Complete the statements by selecting the correct option from the drop-down lists.



**Answer area**

To mask the interior objects, you can use the

POLYGON command with the c option.  
CONVERT command with the Polyline option.  
WIPEOUT command with the Polyline option.

To ensure that the polyline remains on top, you should use the

DRAWORDER command.  
HATCHTOBACK command.  
DRAWORDERCTL system variable.

**Answer:**

**Answer area**

To mask the interior objects, you can use the

POLYGON command with the c option.  
CONVERT command with the Polyline option.  
WIPEOUT command with the Polyline option.

To ensure that the polyline remains on top, you should use the

DRAWORDER command.  
HATCHTOBACK command.  
DRAWORDERCTL system variable.

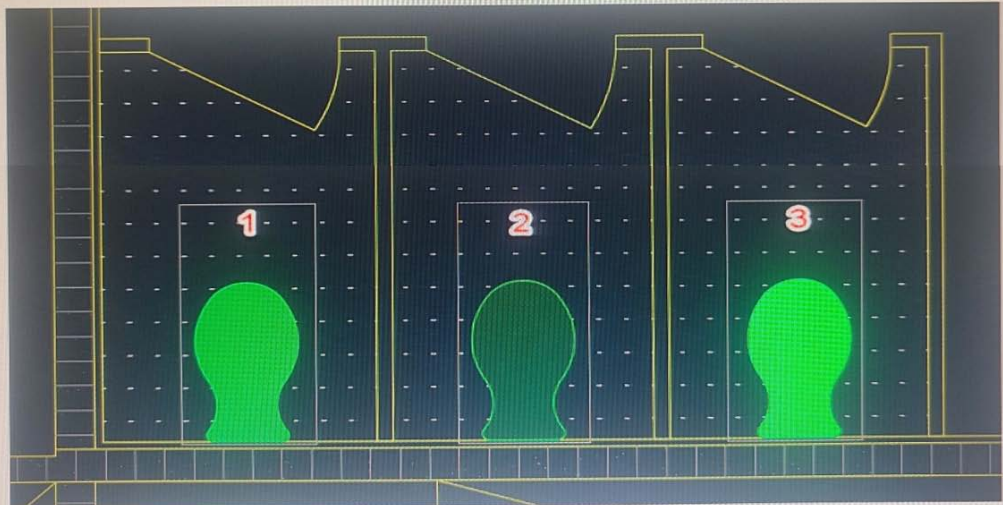
### Question: 3

**HOTSPOT**

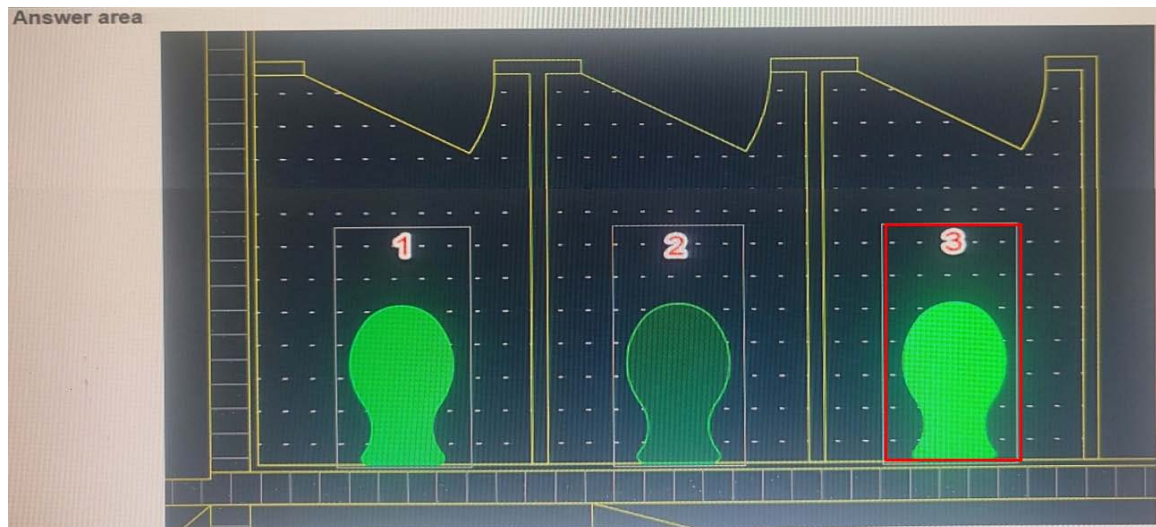
You have a drawing that contains three of the same objects.

Which object has layer transparency set to 90? Click the correct object in the answer area.

**Answer area**



**Answer:**



## Question: 4

### HOTSPOT

Select whether each statement is True or False.

Answer area

	True	False
A polyline can include both straight line segments and arc segments.	<input type="radio"/>	<input type="radio"/>
The radius on a spline can be found in AutoCAD properties.	<input type="radio"/>	<input type="radio"/>
You can use the Explode command to convert a spline into a polyline.	<input type="radio"/>	<input type="radio"/>
You can assign only one elevation to a 2D polyline.	<input type="radio"/>	<input type="radio"/>

**Answer:**

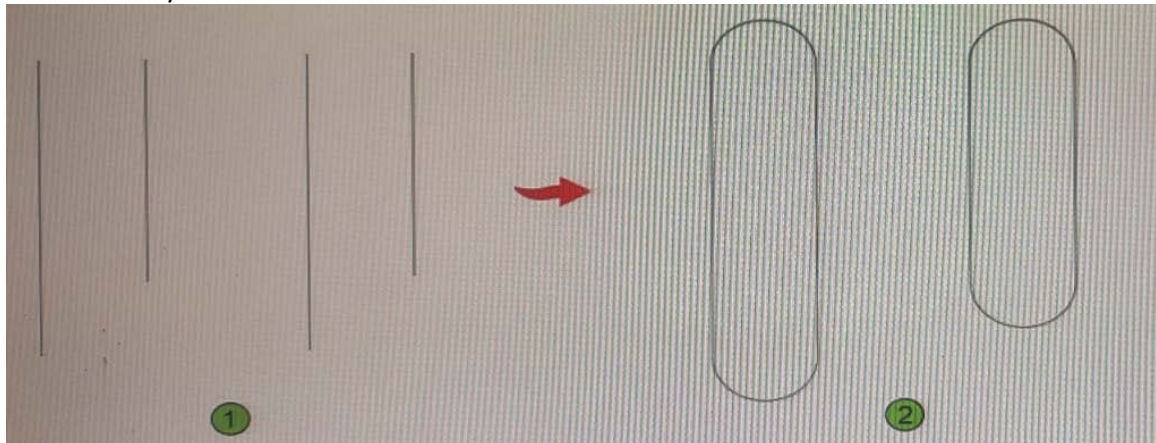
Answer area

	True	False
A polyline can include both straight line segments and arc segments.	<input checked="" type="radio"/>	<input type="radio"/>
The radius on a spline can be found in AutoCAD properties.	<input type="radio"/>	<input checked="" type="radio"/>
You can use the Explode command to convert a spline into a polyline.	<input checked="" type="radio"/>	<input type="radio"/>
You can assign only one elevation to a 2D polyline.	<input type="radio"/>	<input checked="" type="radio"/>

## Question: 5



You need to convert the two sets of parallel lines shown in 1 into the objects shown in 2 without repeating the command.  
What should you use?



- A. The CHAMFER command with the Multiple option
- B. The CHAMFER command with the Polyline option
- C. The FILLET command with the Polyline option
- D. The FILLET command with the Multiple option

**Answer: A**

Explanation:

According to the AutoCAD for Design and Drafting documents, the CHAMFER command creates a beveled corner between two lines, while the FILLET command creates a rounded corner between two lines. Both commands can be used with the Polyline option to apply chamfers or fillets to all corners of a 2D polyline<sup>1</sup>. However, in this case, the lines are not polylines but separate line segments. Therefore, using the Polyline option will not work. Instead, you can use the Multiple option to chamfer or fillet multiple sets of lines without restarting the command<sup>2</sup>.

## Thank You for Trying Our Product

Discount Coupon Code is: **20OFF2022**

**Email:** [support@examsempire.com](mailto:support@examsempire.com)

**Check our Customer Testimonials and ratings  
available on every product page.**

**Visit our website.**

**<https://examsempire.com/>**